

Identifying Trees

Looking at Lowland Trees
West of the Cascade Crest

Key Concepts in Identification

- Use all the information you can get.
- Look for three or more characteristics.
- Geographic Location including elevation.
- Habitat at the location.
- Time of Year.
- Expect Variation in a species.

Tools for Tree ID

- Cascade Conifer Chart
- Deciduous Trees
- Trees PNW app
 - Native trees of Pacific NW
- Books
- Washington Wildflower Search App

Cascade Conifers

	19 Cascade Conifers	Needles	Cones		Ecology		Other Key Identifiers
Needles: Clustered	Lodgepole Pine	Clusters of 2. 1-3"	1-2"	Egg shaped mostly	E&W	0 - treeline	Shore Pine - coastal, short, twisted
	Ponderosa Pine	Clusters of 3. 5 -10"	3 - 6"		E	0 - 4500'	Lodgepole Pine - inland, tall slender
	Whitebark Pine	Clusters of 5 Bundled	2-3"		E mostly	Over 5000'	Alpine areas -- becomes dwarfed, shrublike, twisted
	Western White Pine	Clusters of 5 Splayed	6"	cylindrical		Up to 5000'	
	Alpine Larch	Clusters 30-40 4-sided	1"	Bracts	E	Over 5000'	Deciduous, alpine
	Western Larch	Clusters 15-30 3-sided				3000 to 5000'	Deciduous
Needles: Single	Douglas Fir <small>(not true fir)</small>	Bottle brush.		3 pt. bracts	E&W	0 to 4500'	Branches arch upward.
	Silver Fir	Horizontal "ski jumps" on top		Upright cones on tree tops.	W	0 to 5000'	
	Grand Fir	Horizontal, naked		Do not fall.	E&W		Westside specimens much larger
	Noble Fir	Bottle brush	Largest	Only spikes remain	Snoq. P. & south		
	Subalpine Fir				E&W	over 4500'	"Church steeple" shape
	Western Hemlock	Flat even rows variable length	3/4"		W	0 to 4500'	Droopy branch tips
	Mountain Hemlock	Random directions	2"			over 4000'	Less droopy
	Sitka Spruce	Sharp tip - flat x-sect.	3-4"	Thin scales	W	0 to 2000'	Near shore or Columbia Gorge
	Engelmann Spruce	Sharp tip- sq. x-sect.	1 1/2"		E	3000 to 6000'	In high mt. country
	Pacific Yew	Fine soft pt		Red fleshy berry	W	Low - mid. el.	Bush in shade. Bark is red scaly
Scales	Western Red Cedar	Smooth scales	1/2"	Rosebud	W	Up to 4000'	Red scaly bark
	Alaska (Yellow) Cedar	Prickly scales		Roundish		3000 to 6500'	Droopy branches.
	Alpine (common) Juniper	Scale-like 1/2"	1/4"	Berrylike	E&W	Mid to alpine	Low spreading shrub to 3' (three other less common junipers in Wa.)

Needles

Clustered

Single

Scaled



Cascade Conifers

	19 Cascade Conifers	Needles	Cones		Ecology		Other Key Identifiers
Needles: Clustered	Lodgepole Pine	Clusters of 2. 1-3"	1-2"	Egg shaped mostly	E&W	0 - treeline	Shore Pine - coastal, short, twisted
	Ponderosa Pine	Clusters of 3. 5 -10"	3 - 6"		E	0 - 4500'	Lodgepole Pine - inland, tall slender
	Whitebark Pine	Clusters of 5 Bundled	2-3"		E mostly	Over 5000'	Alpine areas -- becomes dwarfed, shrublike, twisted
	Western White Pine	Clusters of 5 Splayed	6"	cylindrical		Up to 5000'	
	Alpine Larch	Clusters 30-40 4-sided	1"	Bracts	E	Over 5000'	Deciduous, alpine
	Western Larch	Clusters 15-30 3-sided				3000 to 5000'	Deciduous
Needles: Single	Douglas Fir <small>(not true fir)</small>	Bottle brush.		3 pt. bracts	E&W	0 to 4500'	Branches arch upward.
	Silver Fir	Horizontal "ski jumps" on top		Upright cones on tree tops.	W	0 to 5000'	
	Grand Fir	Horizontal, naked		Do not fall.	E&W		Westside specimens much larger
	Noble Fir	Bottle brush	Largest	Only spikes remain	Snoq. P. & south		
	Subalpine Fir				E&W	over 4500'	"Church steeple" shape
	Western Hemlock	Flat even rows variable length	3/4"		W	0 to 4500'	Droopy branch tips
	Mountain Hemlock	Random directions	2"			over 4000'	Less droopy
	Sitka Spruce	Sharp tip - flat x-sect.	3-4"	Thin scales	W	0 to 2000'	Near shore or Columbia Gorge
	Engelmann Spruce	Sharp tip- sq. x-sect.	1 1/2"		E	3000 to 6000'	In high mt. country
	Pacific Yew	Fine soft pt		Red fleshy berry	W	Low - mid. el.	Bush in shade. Bark is red scaly
Scales	Western Red Cedar	Smooth scales	1/2"	Rosebud	W	Up to 4000'	Red scaly bark
	Alaska (Yellow) Cedar	Prickly scales		Roundish		3000 to 6500'	Droopy branches.
	Alpine (common) Juniper	Scale-like 1/2"	1/4"	Berrylike	E&W	Mid to alpine	Low spreading shrub to 3' (three other less common junipers in Wa.)



Trees PNW 4+

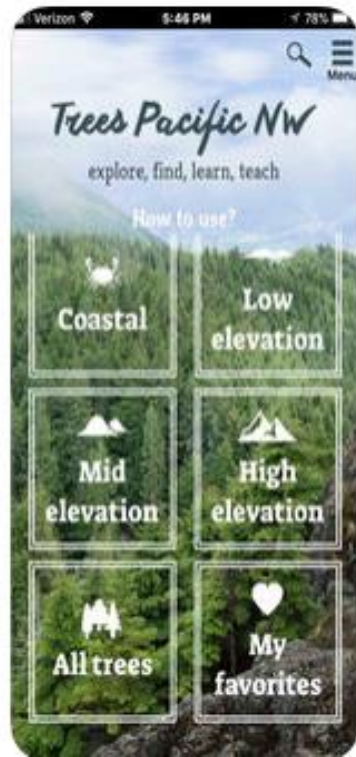
Native trees of the Pacific NW

Cliff Cantor

★★★★☆ 4.1, 11 Ratings

Free

iPhone Screenshots

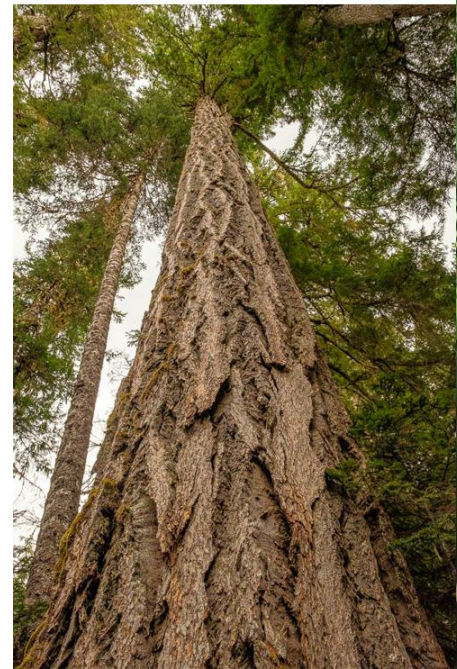


Do some IDs

- Work singly, in pairs, triplets or by table.
- Do not blurt out the answer if you know it.
- Work through the App, look at Stewart's Chart for conifers.
- Try to understand the characteristics that helped you identify it.
- Help your neighbor.



Low to mid Elevation
Both Sides of
Cascade Crest
up to 4,500 ft





Low to Mid Elevation
Both sides of Cascade Crest
uo to 4,500 ft

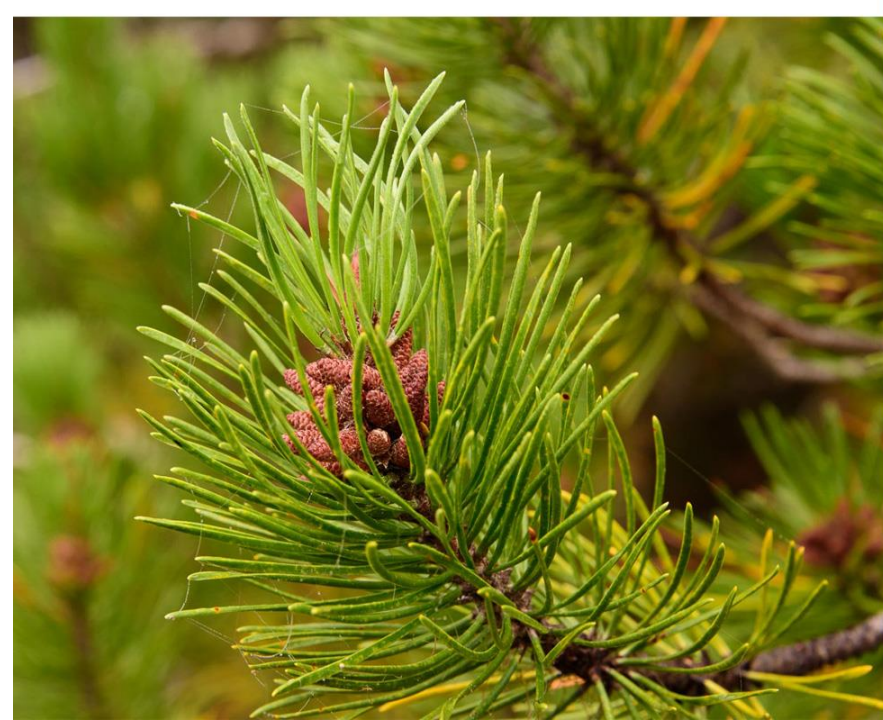


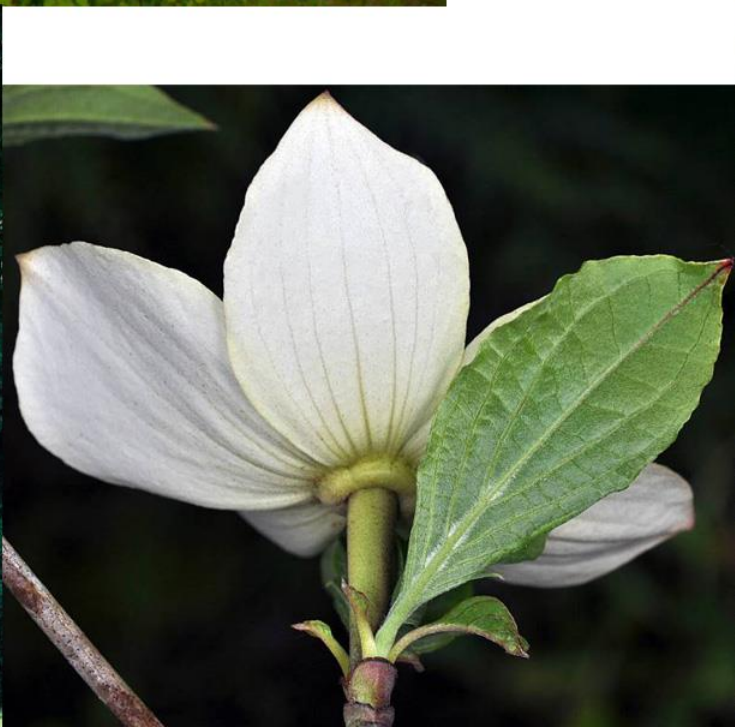




0 feet to treeline

Along the coast & abundant east of Cascade Crest





Summarize

- Use all the information you can get
- Look for more than one characteristic
- Geographic Location including elevation
- Habitat at that location
- Time of Year
- Expect Variation in a species



Low to mid Elevation
Bush in shade





West of Cascade Crest
from Sea Level
East of Cascade Crest
2,000 to 5,000 ft mostly



Bud Kovalchik

